



Captair Bio Smart

Mobile filtered PCR workstation

**PCR handling with a high
level of protection**





SMART TECHNOLOGY

Simple, intuitive communication by light shows the status of the workstation

High efficiency particulate filter
HEPA H14 or ULPA U17

Internal UV light for
UV-C decontamination

Air flow
monitoring

Internal LED
lighting > 800Lux

UV resistant front and
side panels protection
against β radiation

Ergonomic slanted
design for comfortable
and safe working position

Easy to clean worktop
(chemical resistant laminate
or stainless steel)

UV Safety switch



Remote control to monitor the Erlab Smart products, change the settings, and deliver safety alerts immediately.

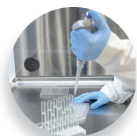


Life in the laboratory becomes simpler and safer

Save your time while saving your samples during PCR experiments !

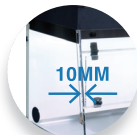
Without an efficient contamination protection from a previous PCR experiment, from the operator or from the room, you face the risk to be obliged to restart your entire PCR experiment, thus wasting valuable time and precious samples!

Captair Smart Bio are vertical laminar flow cabinets, specifically designed to protect efficiently the DNA and RNA samples to be amplified against contamination by other unwanted DNAses or RNAses.



DNA/RNA free workstation

- The positive airflow applied inside the enclosure through a high efficiency particulate filter (type HEPA H14 or ULPA U17) prevents the intrusion of any contaminants even when introducing the arms within the working area.



10 mm enclosure thickness

- To protect against β radiation when a ^{32}P - end -labeled primer is used.



Easy to clean

- Seamless worktop with smooth corners made of black TRESPA® Top Lab Plus phenolic resin or Stainless Steel 304L



UV-C decontamination

- Protect your DNA or RNA samples against contamination from the previous experiment (cross-contamination) through a powerful UV-C lamp 254 nm triggered by an adjustable timer (from 5 to 30 mn).
- This UV-C lamp switches itself off if the operator opens the lower door by accident during decontamination.

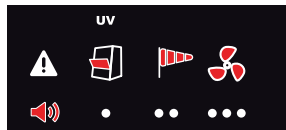


Ergonomic design

- Slanted sash provides an ergonomic working position for comfort and productivity.
- Enclosure large enough to receive all the PCR equipment: minicentrifuge, tube rack, automatic pipettes, thermocycler... High luminosity through an internal LED light > 800 lux

Simpler to use*

- The SMART technology informs users about operational issues
- Light and sound pulses provide real time information indicating that:



- The sash is opened during UV decontamination
- Air face velocity is compromised: check sash, pre-filter or HEPA / ULPA filter.
- Fan failure has occurred.

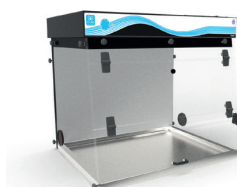
- The eGuard Remote Control to monitor the Erlab Smart products, change the settings, and deliver safety alerts immediately.

Safer to operate*

- ULPA U17 filter guarantees a filtration efficiency of 99.999995% for particles larger than 0.1 μm (European standard EN 1822: 2009) or 99.999% at 0.12 microns (US ASME standard) or HEPA H14 filter guarantees a filtration efficiency of 99.995% for particles larger than 0.1 μm (European standard EN 1822: 2009) or 99.7% at 0.3 μm (US ASME standard)
- Optional molecular filter for additional protection from VOC present in the laboratory air.
- The integrated anemometer monitors the airflow and release an alarm in case of pressure drop indicating that the prefilter or the main HEPA / ULPA filter is clogged and shall be changed.

Standard range

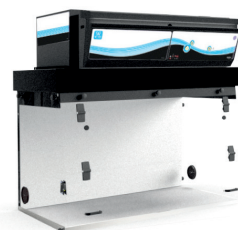
320



321*



391*



Model	320 *	321	391
External size (mm) (L x W x H)	809 x 616 x 715	809 x 615 x 967 - 1066	1005 x 615 x 967 - 1066
Internal size (mm) (L x W x H)	765 x 497 - 584 x 595	765 x 497 - 584 x 595	969 x 497 - 585 x 595

* Availabbe on Bio 321 and 391

Safety solutions for a variety of applications !



GreenFumehoods
an alternative to
ducted fume hoods



Smart Fume Hoods
for your routine
handlings



Captair Smart
Weighing Stations



Captair Smart
Storage cabinets



Chemtrap Midcap
Filtration System



Captair Flow
Clean Air Enclosures



Captair Bio
PCR Workstations



Captair Pyramid
Portable Glovebox



Halo
Laboratory Air
Filtration system



Halo Sense
Lab Air Quality Sensor

Europe

erlab D.F.S S.A.S (France)
Parc d'Affaires des Portes
BP 403
27104 Val de Reuil Cedex - France
Tel. : +33(0)2 32 09 55 80
Fax. : +33(0)2 32 09 55 90
E-Mail : Ventes@erlab.net

North America

erlab, Inc. (USA)
388 Newburyport Turnpike
Rowley, MA 01969 - USA
Tel. : +1(978) 948-2216
Fax. : +1(978) 948-3354
E-Mail : CaptairSales@erlab.com

Asia, Middle East, Africa, South America Kunshan erlab D.F.S Co.,Ltd

Tel. : +86 (0)512 5781 4085
Fax. : +86 (0)512 5781 4082
E-Mail : erlab-sales@erlab.net

